



STAMPINGS OF MINNESOTA, Inc.

21980 HAMBURG AVENUE
LAKEVILLE, MN 55044

Certified ISO9001:2015 & AS9100 D

Michael J. Nicklawske
President
952-469-8646
miken@stampingsofminnesota.com

Jeff Cosner
Manufacturing Services
952-469-8644
jcosner@stampingsofminnesota.com

www.stampingsofminnesota.com

Business Overview

General Notes:

- Incorporated in St. Paul, Minnesota in 1963
- Moved to Lakeville, Minnesota in 1972
- Family owned & operated
- 51 employees
- \$8 million in annual sales

Services:

- Specializing in short- to medium-run metal stamping and secondary supporting services
- Tool & die design, assembly and product-life maintenance
- Prototyping and sheet metal fabrication services (production laser & turret machines)
- Machining & Assembly secondary supporting services
- ITAR Registered
- Certified ISO9001:2015 & AS9100D

➤ Serving over 120 active customers from the following industries:

- Aerospace – Avionics
- Military, Commercial, Private & Corporate
- Automotive – Recreational
- Automotive – Agriculture
- Commercial Building Security
- Computer Networking Equipment
- Defense – Tactical Weapons
- Residential Housing

Honeywell[®]

TEXTRON

**Rockwell
Collins**

LOCKHEED MARTIN



communications

Raytheon

Parker

GARMIN[®]

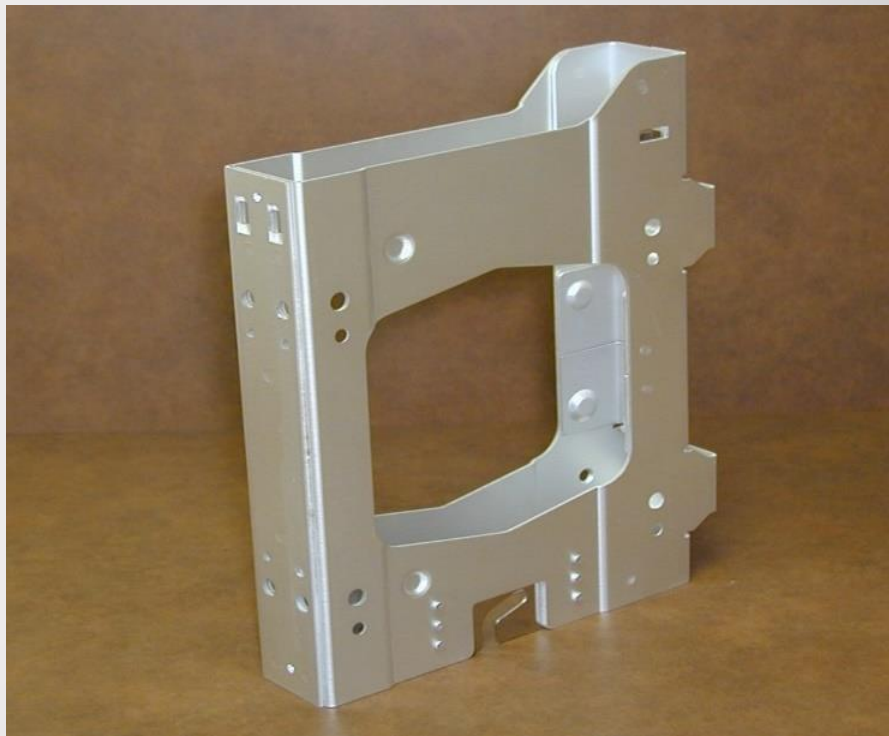
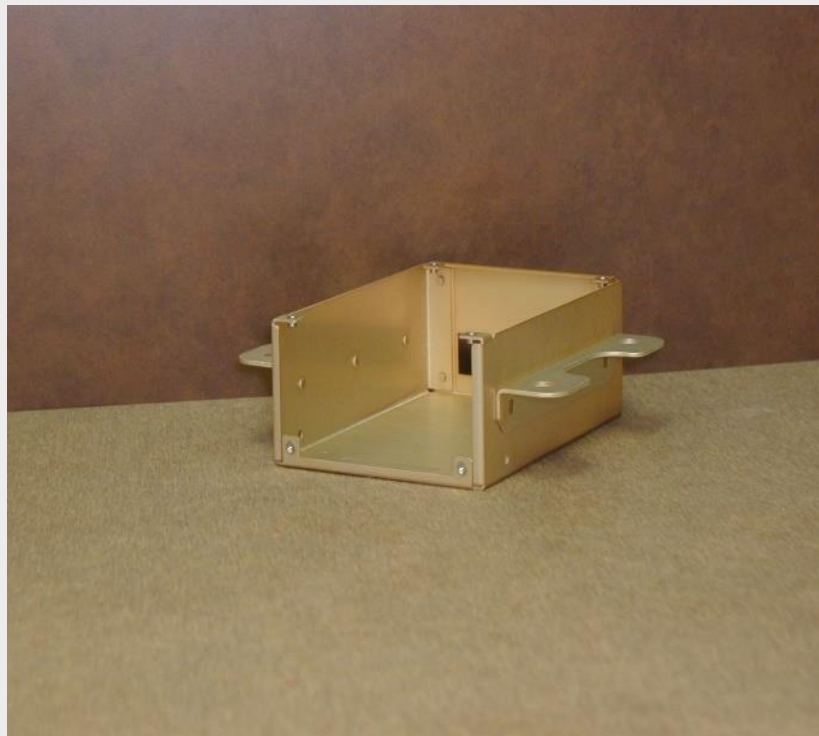
CISCO[™]

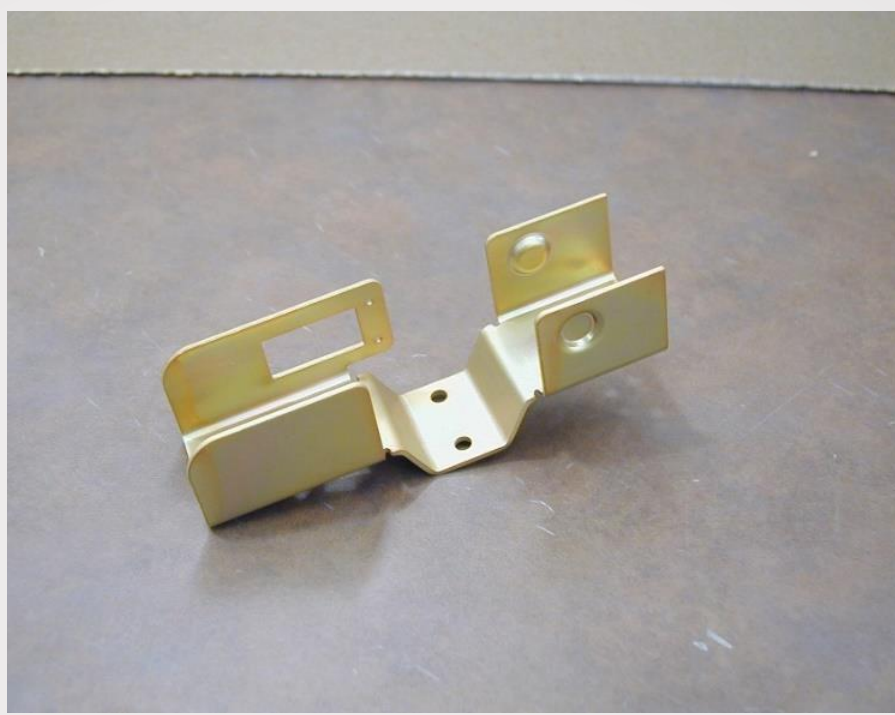
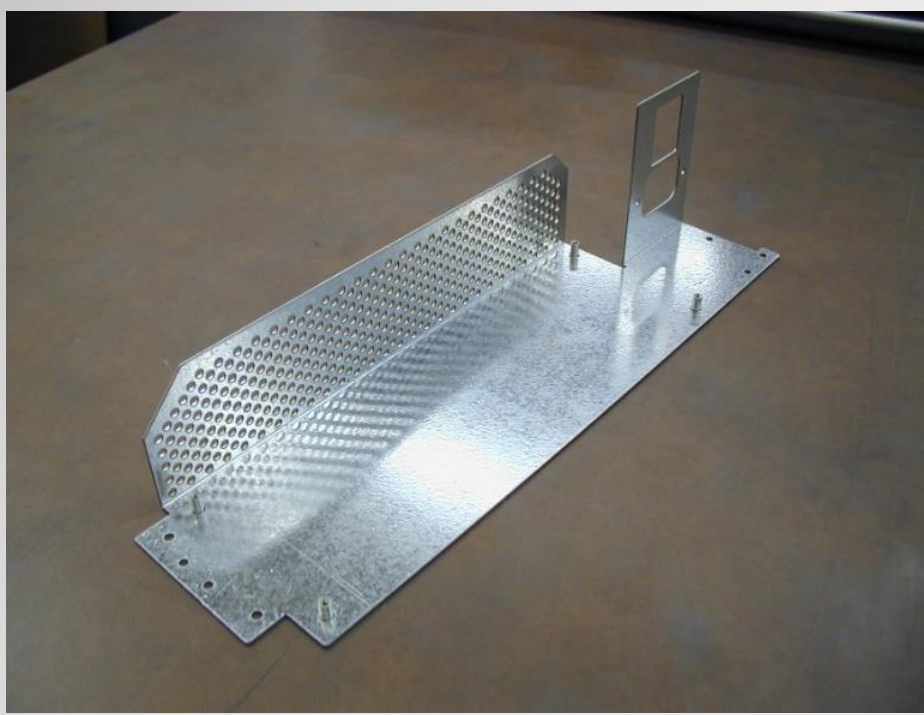
TROPIC
networks

IMMI[™]

Bringing Safety to People[™]

STANLEY[®]
Security Solutions





➤ Award winning Customer Service

2009 Rockwell Collins
Sheet Metal Supplier of the Year



2018 Parker-Hannifin
Silver Link Supplier



Plant Equipment List

Punch Presses

- (1) Amada 220 Ton Punch Press
- (1) Komatsu 150 Ton "C" Frame Punch Press
- (2) Bliss 110 Ton Punch Presses
- (1) Pacific 100 Ton Hydraulic Punch Press
- (2) Amada 80 Ton Punch Presses
- (2) Komatsu 80 Ton "C" Frame Punch Presses
- (4) Bliss 60 Ton Punch Presses
- (7) Bliss 45 Ton Punch Presses
- (3) Bliss 35 Ton Punch Presses
- (1) Havir 30 Ton Punch Press
- (3) Havir 20 Ton Punch Presses
- Maximum Bed Length – 31"
- Maximum Bed Width – 49"
- Maximum Shut Height – 15"

Press Brakes

- (1) Amada 80 Ton Press Brake
- (1) Pacific 75 Ton Press Brake
- (2) Amada 50 Ton Press Brakes
- (1) Amada 50 Ton Press Brake
- (1) Amada 35 Ton Press Brake
- (2) Bantam 12 Ton Press Brakes
- Bendcom Software
- Maximum Bed Length – 8'

Fabricating

- (2) Amada Turret Presses - Vipros 345
- (1) Mazak 1,500 Watt Turbo Laser Cutting Machine
- (1) I.P.G. 3,000 Watt Fiber Optic Laser

Assembly

- (4) Haeger 6 Ton Hardware Inserting Machines
- (2) Haeger 8 Ton Hardware Inserting Machine
- (1) Chicago Rivet Machine
- Haeger Universal T Bracket & 10-32 Stud Shuttle Tooling Set
- (1) Sciaky Welder (75kva & certified to MIL-W-6858)

Inspection

- (Audit System Complies With ISO 19011)
- (1) Scherr-Tumico 24" Optical Comparator
- (1) Starret Optical Comparator
- (1) Wilson Hardness Tester
- (1) Zeiss Contura G2 Coordinate Measuring Machine (CMM)

** All inspection equipment has been calibrated by ISO-IEC 17025 accredited labs, and complies with ISO 10012-1

Miscellaneous Equipment

- (1) Accurshear 12' Hydraulic Shear
- (1) Wysong 58" Mechanical Shear
- (1) Amada Deburring Machine - Model IBT 610
- (2) Dumore 3/4 HP Drill & Tap Unit
- (1) Speedy Cut Vertical Tapping Machine w/ 2 Heads
- (2) Walker-Turner Drill Presses
- (1) Manhattan Drill Press
- (1) DataSouth Shipping Barcode Printer
- (1) Wilton Disc & Belt Sander
- (1) Do-All Econoline Sandblaster
- (1) Millermatic 250x
- (1) SRF-12 Ultra Servo Roll Feeder
- Waycon - Quick Die Change Tools

Programming

- Solidworks Designing Software
- Cadkey Software
- Pro-E Desktop Software
- SMP Programming Software
- Keycreator Designing Software
- Fabcut EDM Programming Software

Tool & Die

- (2) Fanuc Wire Cut EDMs - Model 1iC-S/AWF
- (4) Bridgeport Vertical Milling Machines
- (2) Clausing 20" - Drill Presses
- (2) Kent Surface Grinders
- (1) Harig Surface Grinder
- (1) Wilton Band / Cut Off Saw
- (1) Grob Band Saw
- (1) Fodick Drill
- (1) LeBlond Lathe
- (1) Hardinge Lathe
- (1) Gantry 1 Ton Portable Crane